

Immunology and Contract Research

When the stakes are high, scientific guidance is life-changing

ABL is a contract research organization and leading global provider of immunology and biomarker analyses, offering expert laboratory & sample management services to advance promising candidates from discovery to the clinic.

60 years

of deep bench experience

ISO

9001:2015

Tenured

Immunologists

**Your research success starts with ABL
Supporting you from the bench to the clinic**

Using the methods below, ABL detects immunological responses to candidate biologics with the mission to aid our clients rapidly and efficiently advance promising concepts in support of preclinical and clinical programs.

Project management for Government and Commercial clients – start anywhere!

Study design

Sample processing

Sample storage and shipment

Cellular

Humoral/
Immunoassay

Cytokines&
Biomarkers

Molecular

Report

Study design

Sample processing

Sample storage and shipment

(Immunomonitoring)

Cellular

Humoral/
Immunoassay

**Cytokines&
Biomarkers**

Molecular

Report

**ABL offers flexible scheduling and rapid
turnaround!**

Contact us today!



Cell-based assays

- Custom assay development
- T and B cell ELISpot
- FluoroSpot
- Immunophenotyping
- Intracellular Cytokine Staining (ICS)
- T/B/NK Cell enumeration
- Tetramer and multimer staining
- Lymphoproliferation Study



Immunoassay testing

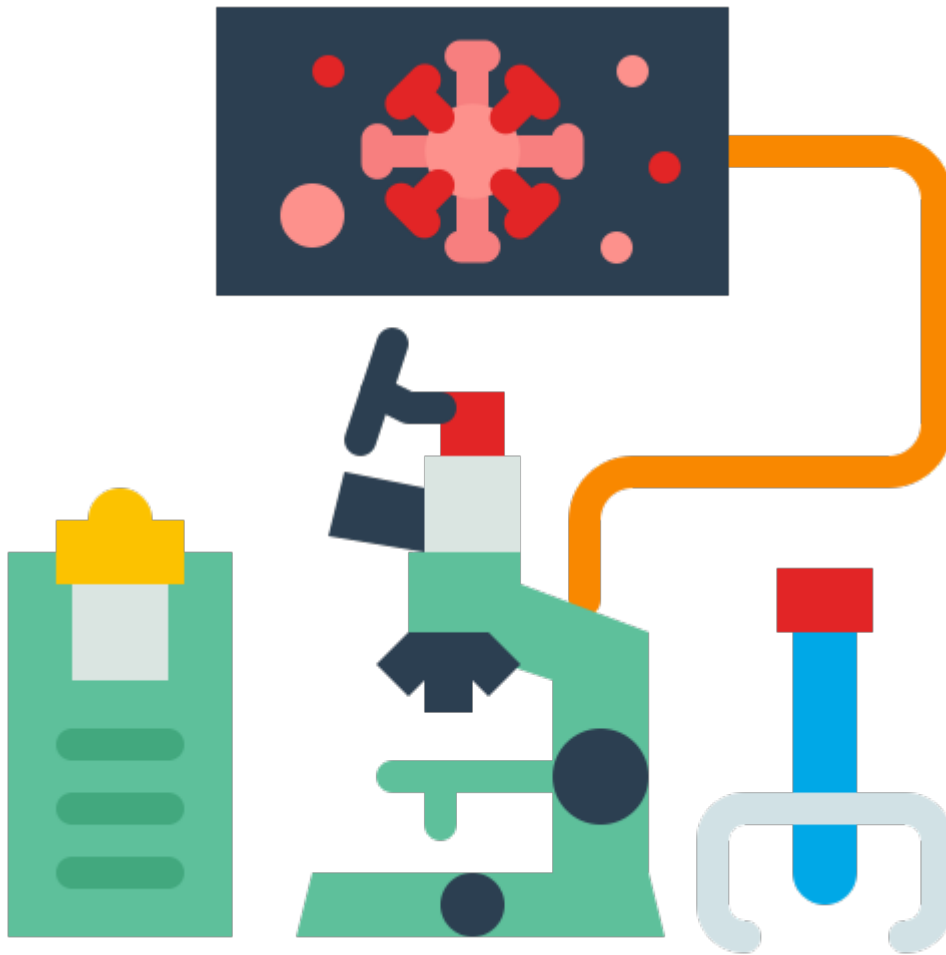
- ELISA
- Anti-Drug antibodies (ADA)
- Antibody affinity measurement
- Neutralizing Antibody (NAb) assays
- Antibody Dependent Cell-mediated Cytotoxicity (ADCC)
- Complement Dependent Cell Cytotoxicity (CDC)
- Antibody-mediated Opsonization / phagocytosis
- Epitope Mapping



Biomarker & cytokine detection

- Ultra-sensitive and multiplexed assays
- Cytokines
- Chemokines
- Neurological biomarkers

Additional ABL Specialties:



Functional Assays

- • Virus neutralization
- • ADCC/phagocytosis
- • Cytotoxicity
- • Proliferation
- • Apoptosis



Molecular Virology

- • Virus characterization
- • Viral load
- • Biodistribution
- • qPCR/ddPCR applications



Sample Management

- • Sample receipt
- • Whole blood, PBMC, serum, plasma, lymph nodes processing
- • Cells and tissues cryopreservation

Product types

Vaccines

Cell Therapies

Immunotherapies

Gene Therapies

Indications

ABL has successfully supported hundreds of studies evaluating the safety, immunogenicity and efficacy of biologics on behalf of our client's preclinical and clinical programs. The breadth of our experience spans:

Cancer

- • Breast cancer
- • Leukemia
- • Lymphoma
- • Colorectal cancer
- • Glioma

Neurological diseases

- • Alzheimer's
- • Parkinson's
- • Multiple Sclerosis
- • Huntington's

Infectious diseases

- • HIV, RSV, HPV, HCV, HBV
- • Zika, Ebola, TB
- • Sepsis, Typhoid
- • Clostridium difficile

Autoimmune diseases

- • Crohn's disease
- • Rheumatoid arthritis
- • Psoriasis
- • NASH
- • Diabetes

Genetic and chronic disease

- • XLRS
- • CAH
- • Canavan disease

Other

- • What indication are you working with?

A quality-driven approach

ABL is certified according to ISO 9001:2015 standards.

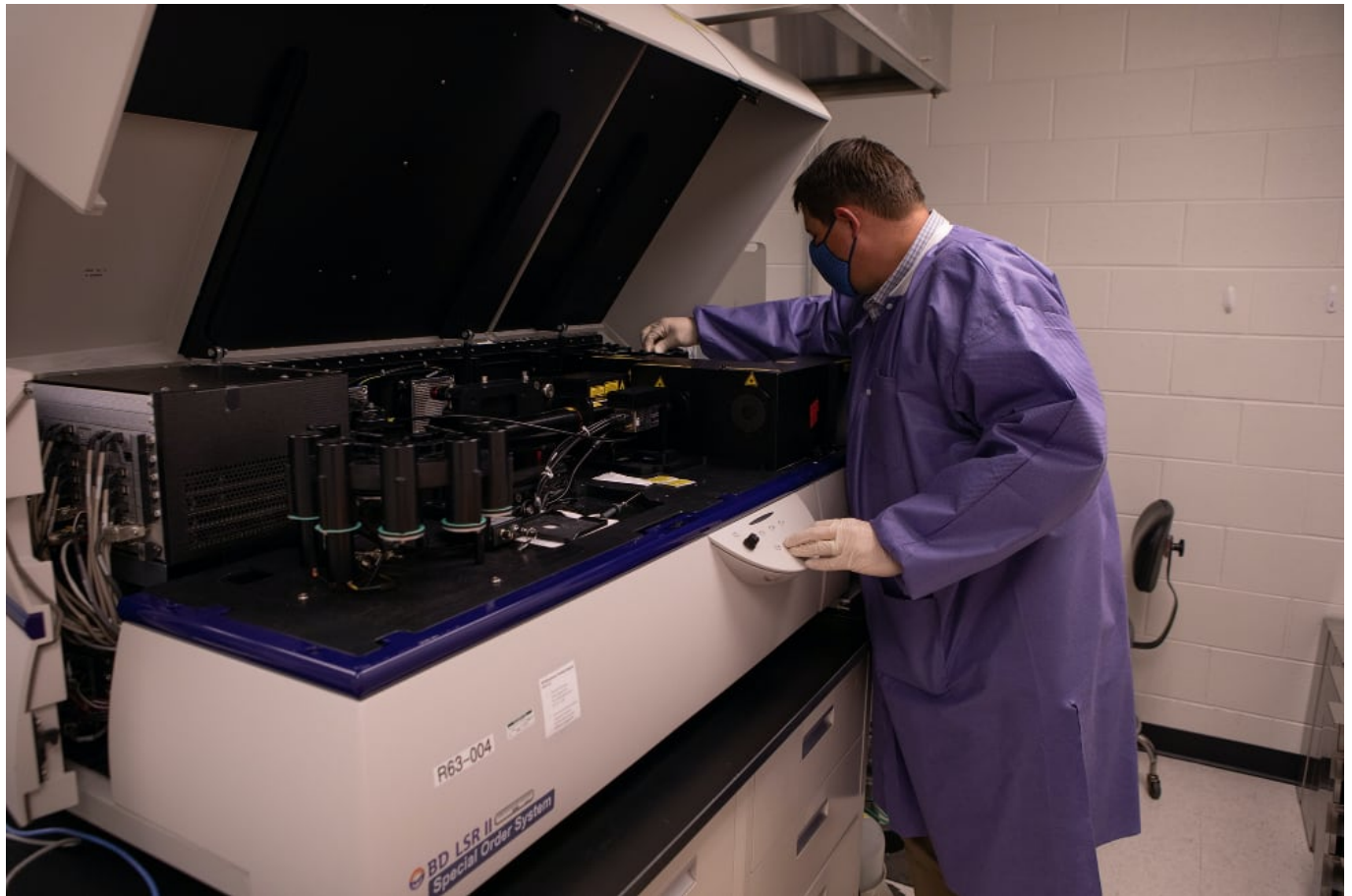
In addition to our commitment to quality, ABL is a participating member of external proficiency programs such as EQAPOL—the External Quality Assurance Program Oversight Laboratory

ABL is honored to be among the participating sites for evaluation of ELISpot, Luminex and Flow Cytometry assay proficiency. ABL has been ranked “Excellent” on our latest round of ELISPOT testing as part of The Duke’s Human Vaccine Institute’s EQAPOL proficiency testing.



Communication

- Project management oversight
- Flexible meeting and reporting options
- Total confidentiality
- Timely notifications and data delivery



Technical Execution

- 60 years of scientific expertise
- Custom approaches based on individual study needs
- Selection of the most relevant, state-of-the-art methods
- Method optimization and validation available
- Efficient execution of testing and analysis
- Full study report



Quality

- ISO 9001:2015
- Secured systems
- Stringent QC of data
- Equipment monitoring & maintenance
- Full traceability
- Internal proficiency assessments

Our all-in-one immunology facility



Wherever you are in your product development pipeline, ABL has established protocols and trained personnel for rapid study set-up. We can transfer your method to our laboratories or our team of scientists can work with you to adapt or develop a novel method. In most cases, fresh or frozen samples can

be assayed with results provided in your preferred format.

ABL has been ranked 'Excellent' for ELISPOT testing with EQAPOL external quality assurance program.



Contact us today to see how ABL can help you advance your product!

Contact Us Today